



# 2003 Zeagle Product Specifications

## Custom Backplate BC System

### Harness Options



This is a modular system that provides for a truly customized BC. Start by picking your harness and backplate assembly. Next select cylinder mounting and bladder to complete assembly.

519-BPSH  
SS backplate Assy. w/**Std. Harness**, Shoulder Pads, Single Cyl. Mounting Kit, **1" Crotch Strap**



519-BPDH  
SS backplate Assy. w/**Dlx. Harness**, Shoulder Pads, Single Cyl. Mounting Kit, **2" Crotch Strap**

Detail of Deluxe Harness

### Hardware Selection

Cylinder Mounting Options

BOLT KITS

- 519-BK65 Twin Cyl. 6.5"
- 519-BK55 Twin Cyl. 5.5"
- 519-BKBA Attach bladder assy. to backplate

OTHER MOUNTING OPTIONS

- 519-SC01 Single Cyl. Mounting Kit



Twin Cylinder Mounting Kit



### Bladder & Inflator Options

BLADDER OPTIONS

- 7016B All Elastic, 34# lift
- 7718C Ballistic Ranger 44#
- 7762 Ballistic Ranger Ltd. 44#



← 7014DR Manta Wing 50#

- 7725 Little Bertha Dual 55#
- 7722 Ballistic Tech 65#
- 7722T Ballistic Tech w/Trim 65#



← 7724 Big Bertha Dual 85#

INFLATOR OPTIONS

- 0524 Std. inf. w/LP hose, flex hose, remote exhaust



← 0523 Octo+® w/ corrugated hose, LP hose, remote exh.

### Assembled Unit



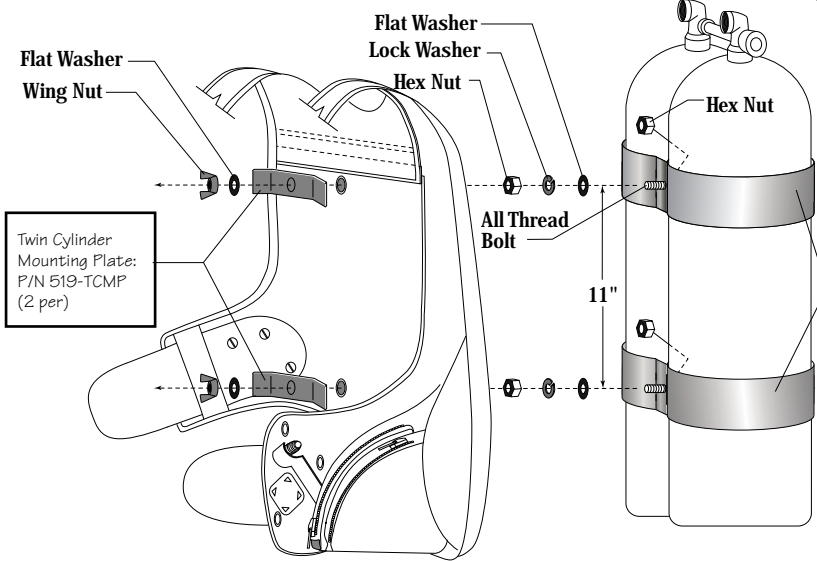
Shown with Big Bertha bladder, standard harness and inflator. Other options available upon request. Specifications subject to change without notice.





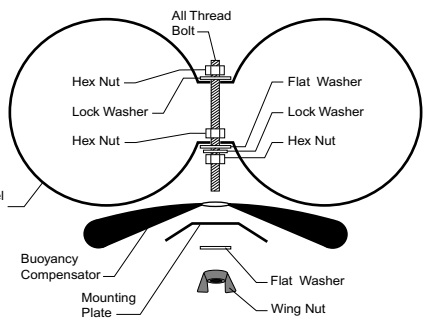
# zeagle

## Metal Backplate Gear

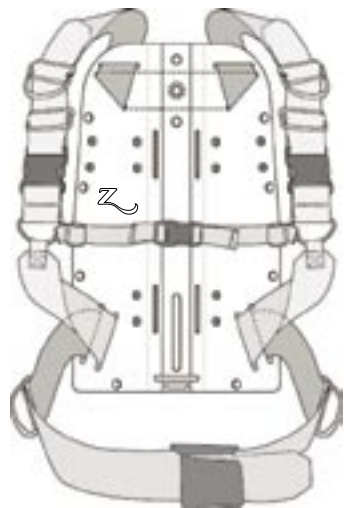


Twin Cylinder Mounting Plate:  
P/N 519-TCMP  
(2 per)

Stainless Steel Cylinder Band:  
(2 PER):  
P/N 519-TB08 - 8.00" Diameter  
P/N 519-TB07 - 7.25" Diameter



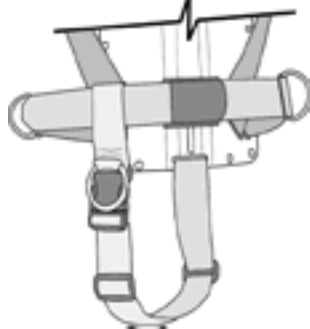
Bolt Kit:  
(2 sets per kit):  
P/N 519-BK55 - 5.5" long  
P/N 519-BK65 - 6.5" long



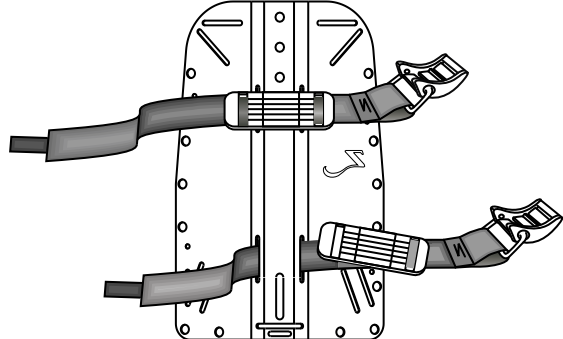
Deluxe Harness: P/N 519-DH01



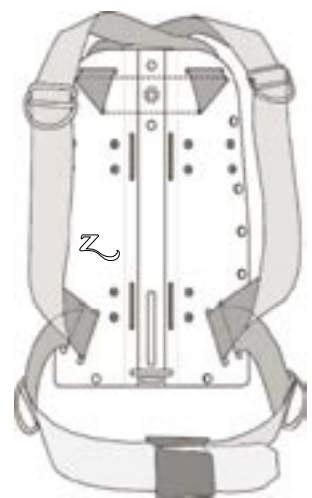
Shoulder Pads: P/N 519-SP01



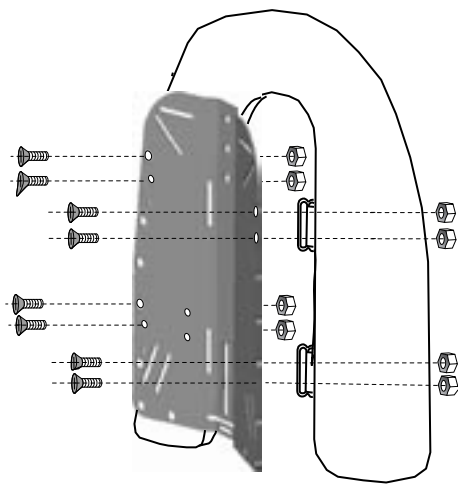
Crotch Strap:  
P/N 519-CS01 - 1" webbing w/ 2.0" diameter towing ring  
P/N 519-CS02 - 2" webbing w/ 2.5" diameter towing ring



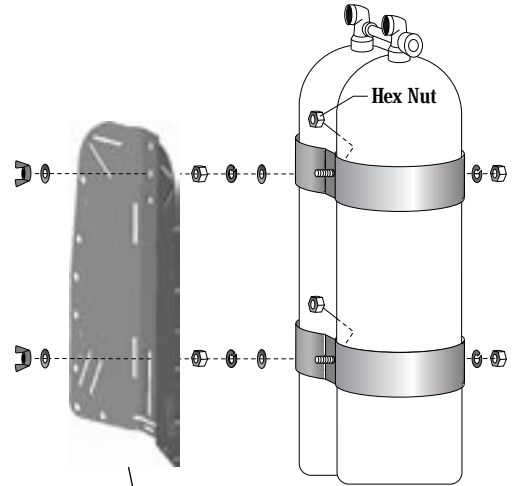
Single Cylinder Mounting Kit  
(bands and inserts):  
P/N 519-SCO1



Standard Harness: P/N 519-SH01



Bladder Mounting Kit: P/N 519-BKBA  
(included with Backplate)



Back Plate:  
P/N 519-BPO1S - Stainless Steel  
P/N 519-BPO1T - Titanium